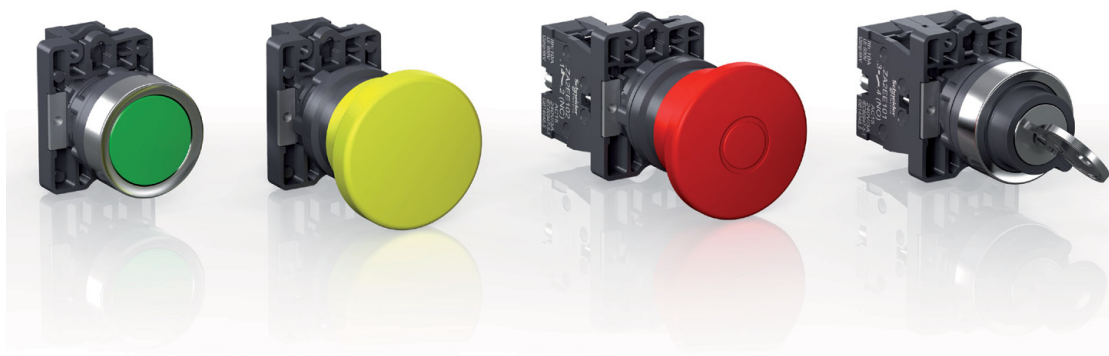


Control and signaling units Ø 22

Harmony[®] Easy XA2 plastic

Catalog

May 2014



General contents

Harmony® Easy XA2 plastic

| | |
|--|---------------|
| ■ General presentation..... | page 2 |
| Selection guide | page 4 |
| ■ General | |
| □ Presentation | page 6 |
| □ Description | page 7 |
| ■ References | |
| □ Spring return pushbuttons | page 9 |
| □ Mushroom head pushbuttons, spring return | page 9 |
| □ Pushbuttons, push-push..... | page 9 |
| □ Emergency switching off pushbuttons, push-pull and turn to release | page 10 |
| □ Selector switches, with standard handle or with long handle..... | page 10 |
| □ Key switches..... | page 10 |
| □ Illuminated pushbuttons, flush push with integral LED | page 11 |
| □ Contact functions with screw clamp terminal connections | page 11 |
| □ Accessories for pushbuttons..... | page 11 |
| ■ Product reference index | page 12 |

Control and signaling units Ø 22

Harmony® Easy XA2, plastic

Pushbuttons and switches

Harmony® Easy XA2, plastic, modular pushbuttons and switches with metallic-look ring

The Harmony® Easy XA2 plastic, modular range of pushbuttons and switches are used for a wide range of control and signaling applications. Their diameter, Ø 22 mm / 0.866 in. makes them suitable for standard OEM and panel builder applications. With plastic material, they provide a solution for industrial applications demanding a high resistance to chemical agents. The modular design allows flexible and simple setup for complete products.

Wide choice of products

- > The Harmony® Easy XA2 range are available in the form of complete units. These range allow the customers to choose the right product among: various types of heads, 2 types of functions (contact and signaling), and an easy connection by screw clamp terminal connectors.

Contact functions

- Pushbuttons with spring return and push-push
- Selector switches and key switches, 2 or 3 positions
- Emergency switching off pushbuttons with push-pull and turn to release



Contact and signaling functions

- Illuminated pushbuttons with spring return



Ease and comfort of choice

- > Allows customers to easily select the key functions for standard applications
- > Supported by the service of Schneider Electric
- > Wide availability throughout an extensive distribution network

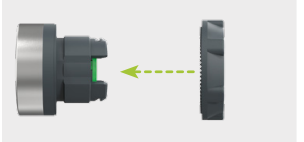


Easy selection of the right product among the wide range of modular pushbuttons and switches

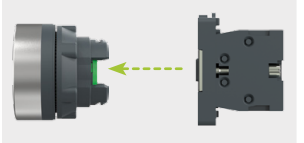
Easy installation

- > Installation of pushbuttons is simple and easy
- > Mounting by single nut to the control panel
- > Anti-rotation plate prevents the head from rotation

- Single lock ring for mounting on control panel

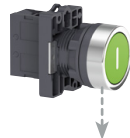


- Clip-together component system for head, body, contacts, and LED light blocks



Groomed ergonomics

- > Metallic-look ring on pushbuttons and switches gives a modern look
- > Ergonomic curve on the selector switches allows flexible operation



Metallic-look ring



Ergonomic curve



Proven robustness

- > Conforming to most demanding international standards and approvals
- > Tested and certified performance
- > Excellent resistance to mechanical shock and vibration
- > Supports extended temperature range from -40°C to +70°C

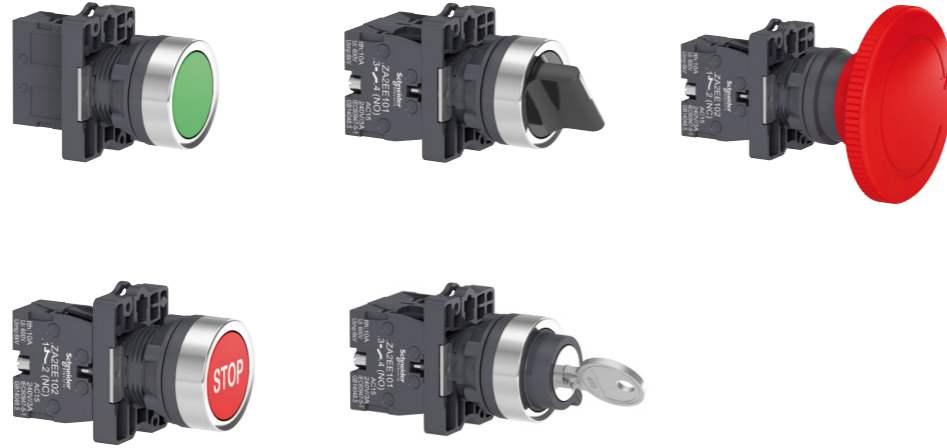


Helps customer to
improve the reliability

Control and signaling units Ø 22

Harmony® Easy XA2, plastic
Pushbuttons and switches

| Type of products | Contact functions | | |
|------------------|-------------------|---------------------------|-------------------------------------|
| | Pushbuttons | Selector and key switches | Emergency switching off pushbuttons |



| | | | | |
|---|-----------------|--|---|--|
| Description of range | | <ul style="list-style-type: none"> Pushbuttons, spring return: flush push, mushroom head, and push-push | <ul style="list-style-type: none"> Selector and key switches, 2 or 3-position: Short handle, long handle and key | <ul style="list-style-type: none"> Emergency switching off pushbuttons: turn to release and push-pull |
| Features | Products | Complete units | | |
| | Shape of head | Circular | | |
| Drilling or cut-out for mounting | | Ø 22 mm/0.866 in. | | |
| Degree of protection | | IP 54 conforming to standard IEC 60529 | | |
| International standards | | IEC 60947-5-1, EN 60947-5-1, GB/T 14048.1-93, GB/14048.5-93 | | |
| Product certification | | CCC | | |
| Cabling | | Screw clamp terminal connections Faston connectors | | |
| Mounting | Panel thickness | Ø 1 to 6 mm/0.04 to 0.24 in. | | |
| Type references | | XA2EA●●/EA●●●●/EC●●/ XA2ER●●/EH0●● | XA2ED●●/EJ●●/EG●● | XA2ET●●/ES●●● |

| Contact and signaling functions |
|---------------------------------|
|---------------------------------|



| |
|--|
| <ul style="list-style-type: none"> Illuminated pushbuttons, spring return: flush push |
| Complete units |
| Circular |
| Ø 22 mm/0.866 in. |
| IP 54 conforming to standard IEC 60529 |
| IEC 60947-5-1, EN 60947-5-1, GB/T 14048.1-93, GB/14048.5-93 |
| CCC |
| Screw clamp terminal connections Faston connectors |
| Ø 1 to 6 mm/0.04 to 0.24 in. |
| XA2EW3●●● |

Control and signaling units Ø 22

Harmony® Easy XA2, plastic

Pushbuttons and switches

Presentation

The Harmony® Easy XA2 Ø 22/0.866 in. range of plastic control and signaling units combines simplicity of installation, flexibility and robustness. It meets the requirements of the majority of industrial applications. The metallic-look ring design on the pushbuttons and switches gives them a modern look. These products are available in the form of complete units.

■ This range includes:

- Pushbuttons, selector/key switches, Emergency switching off pushbuttons for Start/Stop control of machines and installations, adjustment and parametering (contact functions),
- Illuminated pushbuttons for control and signaling (contact functions and signaling functions).

■ The pushbutton and switch control offer (illuminated and non-illuminated) comprises:

- Flush, spring return marked and unmarked pushbuttons, mushroom head spring return pushbuttons,
- Illuminated pushbuttons, spring return,
- Ø 40/1.575 in., Ø 30/1.181 in., and Ø 60/2.362 in. Emergency switching off pushbuttons,
- Selector switches with short and long handle,
- Key switches,
- Various accessories.

Installation

■ Harmony® Easy XA2 products are both simple and quick to install:

- Mounting by a single nut to the control panel,
- Body/fixing collar simply clip on the head,
- Anti-loosening system for screw clamp terminals of contact blocks.

■ Type of connection: Screw clamp terminal and faston terminals.

Environment

The performance features of the Harmony® Easy XA2 range meet the following specifications:

■ Degrees of protection:

- IP 54 conforming to standard IEC 60529

■ International standards:

- IEC 60947-5-1, EN 60947-5-1, GB/T 14048.1-93, GB/14048.5-93

■ Product certification:

- CCC

For more technical information, please refer to our website www.schneider-electric.com.

Control and signaling units Ø 22

Harmony® Easy XA2, plastic

Pushbuttons and switches: complete units

Description

The Ø 22/0.866 in. range of control and signaling units comprises complete units

Functions

Contact functions

Pushbuttons, spring return



| | | | |
|----------------------|--|------------------------------|-------------------------------|
| Type of push | Flush push, unmarked | Flush push, marked | Mushroom head |
| Degree of protection | IP 54 | IP 54 | IP 54 |
| Color | White, Black, Green, Yellow, Blue, and Red | Green, Black, White, and Red | Black, Green, Red, and Yellow |
| Reference | XA2EA●1/EA42 | XA2EA33●1/EA43●2 | XA2EC●1/EC42/ER21 |
| Pages | 9 | 9 | 9 |

Pushbuttons, push-push



| | |
|----------------------|--|
| Type of push | Push-push |
| Degree of protection | IP 54 |
| Color | White, Black, Green, Yellow, Blue, and Red |
| Reference | XA2EH0●1/EH042 |
| Pages | 9 |

Selector or key switches, 2 or 3-position



| | | | |
|----------------------|----------------|----------------|---------------------|
| Type of push | Short handle | Long handle | Key |
| Degree of protection | IP 54 | IP 54 | IP 54 |
| Reference | XA2ED●● | XA2EJ●● | XA2EG21/EG●3 |
| Pages | 10 | 10 | 10 |

Functions (continued)

Contact functions (continued)

Emergency switching off pushbuttons



| | |
|-----------------------------|--|
| Type of push | Turn to release and push-pull (Ø 30 mm/1.181 in., Ø 40 mm/1.575 in., Ø 60 mm/1.362 in.) |
| Degree of protection | IP 54 |
| Color | Red and Black |
| Reference | XA2ET42/ES•42/ES422 |
| Page | 10 |

Combined functions: contact and signaling

Illuminated pushbuttons, spring return



| | |
|-----------------------------|--------------------------------------|
| Type of push | Flush push |
| Degree of protection | IP 54 |
| LED | Integral LEDs, 24, 220 or 380 V |
| Color | White, Green, Red, Yellow, and Blue. |
| Reference | XA2EW3•B1/3•M1/ 3•Q1 |
| Pages | 11 |

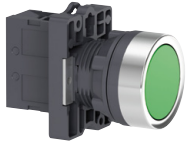
Control and Signaling Units Ø 22

Harmony® Easy XA2, plastic

Spring return pushbuttons, marked and unmarked

Mushroom head pushbuttons, spring return

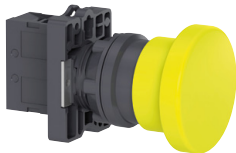
Pushbuttons, push-push



XA2EA31



XA2EA4342



XA2EC51



XA2EH021

Spring return pushbuttons with flush push

| Shape of head | Type of contacts | | Color of push | Marking | Reference | Weight kg/lb |
|-----------------|------------------|-----|---------------|---------|------------------|--------------|
| | N/O | N/C | | | | |
| Unmarked | | | | | | |
| | 1 | - | White | - | XA2EA11 | 0.032/0.071 |
| | | | Black | - | XA2EA21 | 0.032/0.071 |
| | | | Green | - | XA2EA31 | 0.032/0.071 |
| | | | Yellow | - | XA2EA51 | 0.032/0.071 |
| | | | Blue | - | XA2EA61 | 0.032/0.071 |
| | - | 1 | Red | - | XA2EA42 | 0.032/0.071 |
| Marked | | | | | | |
| | 1 | - | Green | "I" | XA2EA3311 | 0.032/0.071 |
| | 1 | - | Black | "↑" | XA2EA3351 | 0.032/0.071 |
| | 1 | - | White | "↑" | XA2EA3341 | 0.032/0.071 |
| | - | 1 | Red | "O" | XA2EA4322 | 0.032/0.071 |
| | - | 1 | Red | "STOP" | XA2EA4342 | 0.032/0.071 |

Mushroom head pushbuttons, spring return

| Shape of head | Type of contacts | | Color of push | Diameter Ø (mm)/in. | Reference | Weight kg/lb |
|---------------|------------------|-----|---------------|---------------------|----------------|--------------|
| | N/O | N/C | | | | |
| | 1 | - | Black | 40/1.575 | XA2EC21 | 0.052/0.115 |
| | 1 | - | Green | 40/1.575 | XA2EC31 | 0.052/0.115 |
| | - | 1 | Red | 40/1.575 | XA2EC42 | 0.052/0.115 |
| | 1 | - | Yellow | 40/1.575 | XA2EC51 | 0.052/0.115 |
| | 1 | - | Black | 60/2.362 | XA2ER21 | 0.058/0.128 |

Pushbuttons, push-push with flush push

| Shape of head | Type of contacts | | Color of push | Reference | Weight kg/lb |
|---------------|------------------|-----|---------------|-----------------|--------------|
| | N/O | N/C | | | |
| | 1 | - | White | XA2EH011 | 0.04/0.088 |
| | 1 | - | Black | XA2EH021 | 0.04/0.088 |
| | 1 | - | Green | XA2EH031 | 0.04/0.088 |
| | - | 1 | Red | XA2EH042 | 0.04/0.088 |
| | 1 | - | Yellow | XA2EH051 | 0.04/0.088 |
| | 1 | - | Blue | XA2EH061 | 0.04/0.088 |

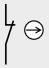
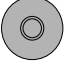

Note: Please refer to our website www.schneider-electric.com for information on dimensions

Control and signaling units Ø 22

Harmony® Easy XA2, plastic
 Emergency switching off pushbuttons,
 Selector switches, with standard or long handle
 Key switches

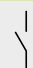
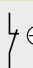






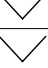

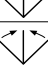
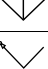





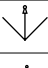
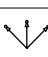


XA2ET42

| Emergency switching off pushbuttons | | | | | | |
|---|-----------------|--|-------|---------------------|-----------------|--------------|
| Shape of head | Type of push | Type of contacts | Color | Diameter Ø (mm)/in. | Reference | Weight kg/lb |
| | |  N/C | | | | |
|  | Push-pull | 1 | Red | 40/1.575 | XA2ET42 | 0.088/0.194 |
|  | Turn to release | 1 | Red | 30/1.181 | XA2ES442 | 0.056/0.123 |
| | | | Red | 40/1.575 | XA2ES542 | 0.058/0.128 |
| | | | Red | 60/2.362 | XA2ES642 | 0.064/0.141 |
| | | | Black | 30/1.181 | XA2ES422 | 0.056/0.123 |



XA2ED53

| Selector switches, with standard handle or with long handle Key switches | | | | | | | |
|--|--------------|--|------------------------------|---|---|---------------------------------|---|
| Shape of head | Type of push | Type of contacts | Number and type of positions | Reference | Weight kg/lb | | |
| | |  N/O | | | | | |
| | |  N/C | | | | | |
|  | Short handle | 1 | – | 2 - stay put |  | XA2ED21 | 0.04/0.088 |
| | | 1 | 1 | 2 - stay put |  | XA2ED25 | 0.054/0.119 |
| | | 2 | – | 3 - stay put |  | XA2ED33 | 0.054/0.119 |
| | | 2 | – | 3 - spring return from 2 sides |  | XA2ED53 | 0.054/0.119 |
| | | 1 | – | 2 - spring return |  | XA2ED41 | 0.041/0.090 |
| | Long handle | 1 | – | 2 - stay put |  | XA2EJ21 | 0.041/0.090 |
| | | 1 | 1 | 2 - stay put |  | XA2EJ25 | 0.041/0.090 |
| | | 2 | – | 3 - stay put |  | XA2EJ33 | 0.055/0.121 |
| | | 2 | – | 3 - spring return from 2 sides |  | XA2EJ53 | 0.055/0.121 |
| | |  | Key | 1 | – | 2 - stay put, one side pull-out |  |
| 2 | – | | | 2 - stay put, two sides pull-out |  | XA2EG43 | 0.078/0.172 |
| 2 | – | | | 2 - spring return, one side pull-out |  | XA2EG63 | 0.078/0.172 |
| 2 | – | | | 3 - spring return from 2 sides, middle pull-out |  | XA2EG73 | 0.078/0.172 |
| 2 | – | | | 3 - stay put, middle pull-out |  | XA2EG33 | 0.078/0.172 |
| 2 | – | | | 3 - stay put, 3 sides pull-out |  | XA2EG03 | 0.078/0.172 |

Note: Please refer to our website www.schneider-electric.com for information on dimensions



XA2EG03

Control and signaling units Ø 22

Harmony® Easy XA2, plastic

Illuminated pushbuttons with flush push

Bulbs for illuminated pushbuttons

Contact functions for all XA2 pushbuttons and switches



XA2EW36B1

| Illuminated pushbuttons with 24, 220 or 380 V integral LED | | | | | | |
|--|--------------|------------------|------------------|--------|------------------|--------------|
| Shape of head | Type of push | Type of contacts | Supply voltage V | Color | Reference | Weight kg/lb |
| | Flush push | N/O 1 | ≈ 24 | White | XA2EW31B1 | 0.056/0.123 |
| | | | | Green | XA2EW33B1 | 0.056/0.123 |
| | | | | Red | XA2EW34B1 | 0.056/0.123 |
| | | | | Yellow | XA2EW35B1 | 0.056/0.123 |
| | | | | Blue | XA2EW36B1 | 0.056/0.123 |
| | | | ~ 220 | White | XA2EW31M1 | 0.064/0.141 |
| | | | | Green | XA2EW33M1 | 0.064/0.141 |
| | | | | Red | XA2EW34M1 | 0.064/0.141 |
| | | | | Yellow | XA2EW35M1 | 0.064/0.141 |
| | | | | Blue | XA2EW36M1 | 0.064/0.141 |
| | | | ~ 380 | White | XA2EW31Q1 | 0.064/0.141 |
| | | | | Green | XA2EW33Q1 | 0.064/0.141 |
| | | | | Red | XA2EW34Q1 | 0.064/0.141 |
| | | | | Yellow | XA2EW35Q1 | 0.064/0.141 |
| | | | | Blue | XA2EW36Q1 | 0.064/0.141 |



ZA2EE102

| Contact functions | | | | | | |
|----------------------------------|-----------------|------------------|-----------------|-----------------|--------------|--|
| Screw clamp terminal connections | | | | | | |
| Description | Type of contact | Type of contacts | Sold in lots of | Unit reference | Weight kg/lb | |
| Contact blocks | | N/O | 1 | ZA2EE101 | 0.014/0.031 | |
| | | N/C | 1 | ZA2EE102 | 0.014/0.031 | |



DL1LED244



DL1LED246

| Bulbs with BA 9s base fitting and associated accessories | | | | | | |
|--|-----------------|-----------------|--------|------------------|--------------|--|
| Description | Characteristics | Sold in lots of | Color | Unit reference | Weight kg/lb | |
| LEDs | ≈ 24 V | 10 | White | DL1LED241 | 0.002/0.004 | |
| | | 10 | Green | DL1LED243 | 0.002/0.004 | |
| | | 10 | Red | DL1LED244 | 0.002/0.004 | |
| | | 10 | Yellow | DL1LED245 | 0.002/0.004 | |
| | | 10 | Blue | DL1LED246 | 0.002/0.004 | |



ZB5AZ905

| Description | Application | Sold in lots of | Unit reference | Weight kg/lb | |
|---------------------|-----------------------------|-----------------|-----------------|--------------|--|
| Bezel Tool | Tightening head fixing nut | 1 | ZB5AZ905 | 0.016/0.035 | |
| Anti-rotation plate | Prevents head from rotation | 10 | ZB5AZ902 | 0.008/0.018 | |



ZB5AZ902

Note: Please refer to our website www.schneider-electric.com for information on dimensions

| D | | | |
|---------------------|----|-----------|----|
| DL1LED241 | 11 | XA2EW35M1 | 11 |
| DL1LED243 | 11 | XA2EW35Q1 | 11 |
| DL1LED244 | 11 | XA2EW36B1 | 11 |
| DL1LED245 | 11 | XA2EW36M1 | 11 |
| DL1LED246 | 11 | XA2EW36Q1 | 11 |
| X | | Z | |
| XA2EA11 | 9 | ZA2EE101 | 11 |
| XA2EA21 | 9 | ZA2EE102 | 11 |
| XA2EA31 | 9 | ZB5AZ902 | 11 |
| XA2EA42 | 9 | ZB5AZ905 | 11 |
| XA2EA51 | 9 | | |
| XA2EA61 | 9 | | |
| XA2EA3311 | 9 | | |
| XA2EA3341 | 9 | | |
| XA2EA3351 | 9 | | |
| XA2EA4322 | 9 | | |
| XA2EA4342 | 9 | | |
| XA2EC21 | 9 | | |
| XA2EC31 | 9 | | |
| XA2EC42 | 9 | | |
| XA2EC51 | 9 | | |
| XA2EC●1/EC42/ER21 | 7 | | |
| XA2ED21 | 10 | | |
| XA2ED25 | 10 | | |
| XA2ED33 | 10 | | |
| XA2ED41 | 10 | | |
| XA2ED53 | 10 | | |
| XA2EG03 | 10 | | |
| XA2EG21 | 10 | | |
| XA2EG33 | 10 | | |
| XA2EG43 | 10 | | |
| XA2EG63 | 10 | | |
| XA2EG73 | 10 | | |
| XA2EH0●1/EH042 | 7 | | |
| XA2EH011 | 9 | | |
| XA2EH021 | 9 | | |
| XA2EH031 | 9 | | |
| XA2EH042 | 9 | | |
| XA2EH051 | 9 | | |
| XA2EH061 | 9 | | |
| XA2EJ21 | 10 | | |
| XA2EJ25 | 10 | | |
| XA2EJ33 | 10 | | |
| XA2EJ53 | 10 | | |
| XA2ER21 | 9 | | |
| XA2ES422 | 10 | | |
| XA2ES442 | 10 | | |
| XA2ES542 | 10 | | |
| XA2ES642 | 10 | | |
| XA2ET42 | 10 | | |
| XA2ET42/ES●42/ES422 | 8 | | |
| XA2EW31B1 | 11 | | |
| XA2EW31M1 | 11 | | |
| XA2EW31Q1 | 11 | | |
| XA2EW33B1 | 11 | | |
| XA2EW33M1 | 11 | | |
| XA2EW33Q1 | 11 | | |
| XA2EW34B1 | 11 | | |
| XA2EW34M1 | 11 | | |
| XA2EW34Q1 | 11 | | |
| XA2EW35B1 | 11 | | |

Schneider Electric Industries SAS

Head Office
35, rue Joseph Monier
F-92500 Rueil-Malmaison
France

www.schneider-electric.com

The information provided in this documentation contains general descriptions and/or technical characteristics of the performance of the products contained herein. This documentation is not intended as a substitute for and is not to be used for determining suitability or reliability of these products for specific user applications. It is the duty of any such user or integrator to perform the appropriate and complete risk analysis, evaluation and testing of the products with respect to the relevant specific application or use thereof. Neither Schneider Electric nor any of its affiliates or subsidiaries shall be responsible or liable for misuse of the information contained herein.

Design: Schneider Electric
Photos: Schneider Electric

DIA5ED2140104EN

May 2014